



# UP TICK

Creating better connections inside and out through clever design brought this family's vision to life.

STORY *Carli Philips* | STYLING *Das Studio* | PHOTOGRAPHY *Anthony Basheer*

**EXTERIOR** Rosie, the Labrador in the front garden. 'Rand' wall light, Beacon Lighting. Hay 'Palissade' chairs. **DINING** BoConcept dining table. Vase, Bauhaus, South Australia. Hay 'J77' dining chairs. Greystone concrete flooring, Stylecrete. Kapur timber decking. Bowral Chillingham White, Brickworks. Artemide wall light 140, Stylecraft.

“The angle of the room creates a beautiful beam that traces the floor as the sun moves from east to west.”

DINO VRYNIOS, DAS STUDIO



LIVING/OUTDOOR AREA 'Reo' II reclining sofa, King Living. 'Bombay' Rose cushion, Adairs. Vintage Verde Alpi coffee tables from Italy. Vessel and 'Cusp' chair by Rhys Cooper, both Jam Factory. Sculpture by Anna Horne. Daniel-Emma 'Anna' vase. Rectangle cushions, Jardan. Yellow cushion, Muji. Hay 'Palissade' chairs and Mint 'Kaleido' tray. 'Ibsen' dining table, Eco Outdoor.



“**T**hey were really chilled – especially given that it was our studio’s first completed residential project,” says Das Studio managing director Dino Vrynios of his clients, owners Jason and Kylie. “They were very humble and very trusting.” The couple had lived in the house for 16 years, and although they were prepared to make do while they had young children, the long-term plan was always to renovate. By the time they were ready, their Adelaide suburb had gone “gangbusters”.

A 1980s extension had left the house dated and in need of regular repairs. The layout was impractical, with the bathroom off the living zone and the laundry in a cupboard in the dining space. “Because Jason and Kylie had lived in the house for so long, they knew what did and didn’t work. It also meant they had a vision for how it could look,” says Dino, who works alongside his wife and creative director, Sara Horstmann. “Our design process involved re-creating ‘A day in the life of’ so we could get a good idea of how the house would function for them day-to-day.

The brief was for a layout that would connect Jason and Kylie with their two teenage daughters, Lily, 15, and Poppy, 13. “There’s lots of sliding doors so they can easily move between public and private modes. They didn’t want separate spaces – they wanted to be immersed with one another,” says Dino. “We wanted to design something open-plan and future-proof for when their kids get older, which meant having everything on one level. Going bigger isn’t necessarily better and we encouraged them to build smaller, smarter and according to scale. Time, cost and quality are the holy trinity. It really pays back in the long run.”

The existing four bedrooms at the front of the house had been renovated in 2010 and were in good condition so they remained untouched. The hallway was extended with a walk-in robe and interconnected ensuite on one side, and a bathroom and laundry on the other. A wooden arch marks the threshold from the existing house to the new rear extension where there’s a family-friendly, open-plan lounge, dining and kitchen zone. There was no space for a cellar, so

**KITCHEN** Island bench is Caesarstone Cloudburst Concrete. On benchtop: Hay pink ring ‘Gym’ hook. Muuto ‘Kink’ vase. HK Living ‘Stepped’ pink bowl, House of Orange. Thonet round cane barstools, IK Chairs. Custom ‘2BY5’ pendant, About Space. Vitra ‘Akari UF3-Q’ floor lamp, Aura Objects. ABI Interiors ‘Elysian’ kitchen mixer, The Source.







**THIS IS  
THE LIFE**

“This area feels like a community. There’s lots of green spaces and we can walk to all services. It’s so friendly. We feel very connected with our community and it was important that our house encapsulated that with the design and outdoors brief, which we believe it does. There’s an easy flow from inside to outside when entertaining or spending time together as a family.



Dino and Sara incorporated the wine storage in a timber-wrapped pod in the living area.

The biggest design moment comes by way of a dynamic roof form in an upside-down truss shape. “We didn’t want to defer to the easy solution of a basic box,” says Dino. “Inverting the roof truss and tilting it to the north allows for access to direct sunlight in winter, shade in summer and, due to a deep overhang, all-year-round daylight from the south,” adds Sara.

Jason and Kylie wanted clean lines, zero clutter and neutral colours that wouldn’t date, so in the kitchen, there are no handles and everything is hidden from view. For the materials, stone, wood, brick and polished concrete were top of the list. “While the new addition is unapologetically contemporary in form and in stark contrast with the original Victorian villa, it was important the two elements still spoke to one another through materiality and tone to create a cohesive solution,” says Sara. “Using Porta Tasmanian oak lining in the cellar and Polytec Boston Oak on the joinery in the extension helped tie in the warmth of the heritage sandstone and soften the otherwise harsh concrete and masonry forms.”

Sliding doors open onto the outdoor deck and a garden, pool and half basketball court. “Jason and Kylie play basketball – it’s how they met. And their daughters are sporty too. This love for outdoor activities led to the fun addition of a ‘swoosh’ tick on the basketball court. “The absence of a flyscreen contributes to the seamless indoor-outdoor connection and wasn’t a problem for them given the climate and the fact they are outdoorsy people. The glazing runs flush through so it functions as one large area. We very deliberately wanted to break down the threshold.”

It’s this relationship between the kitchen, dining and living areas to the backyard the couple loves. “There’s an easy flow from inside to outside, that is great for entertaining. We wanted the house to represent who we are, which it does,” says Kylie. ▶

*Das Studio: Adelaide, SA, [das-studio.com.au](http://das-studio.com.au).*

*DimCo Building: West Croydon, SA, [dimco.com.au](http://dimco.com.au).*

**KITCHEN** Joinery finished in Polytec Boston Oak. ‘Stripes Ice’ tile in White Matt, National Tiles. Table base powdercoated Oxytech Periwinkle Gloss. Cooktop, Asko. Thonet round cane barstool, IK Chairs. Muuto ‘Kink’ vase. Hay pink ring ‘Gym’ hook. ‘Plat’ handle in Tasmanian Oak, Auburn Woodturning.  
**COURTYARD** The lounge room looks out to a small light well. ‘Cusp’ armchair by Rhys Cooper, Jam Factory.



**THE PALETTE**

Dulux Salt Spray  
(dining & bedroom walls)

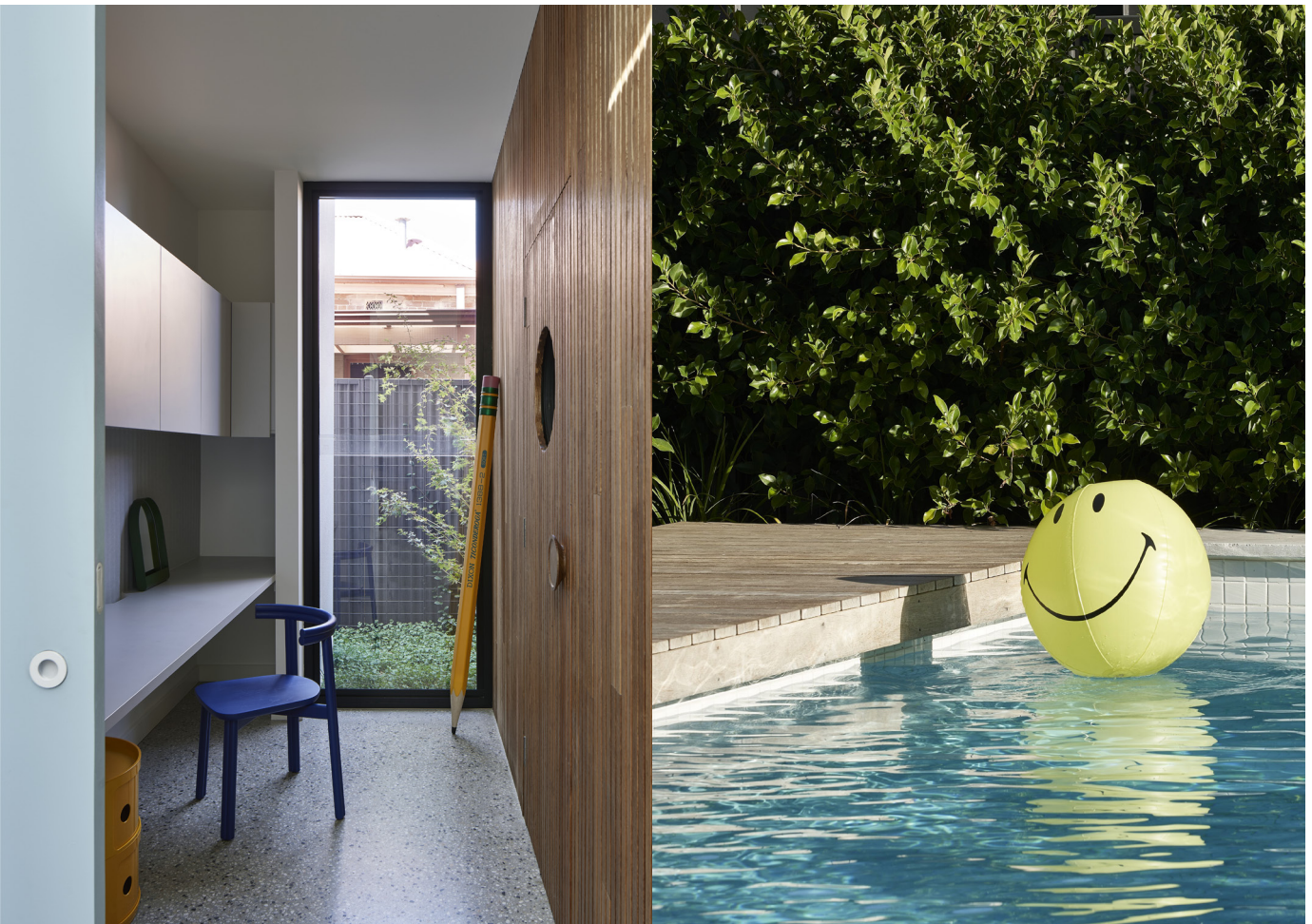
Oxytech Periwinkle Gloss  
(kitchen joinery)

Dulux Domino  
(front fence)

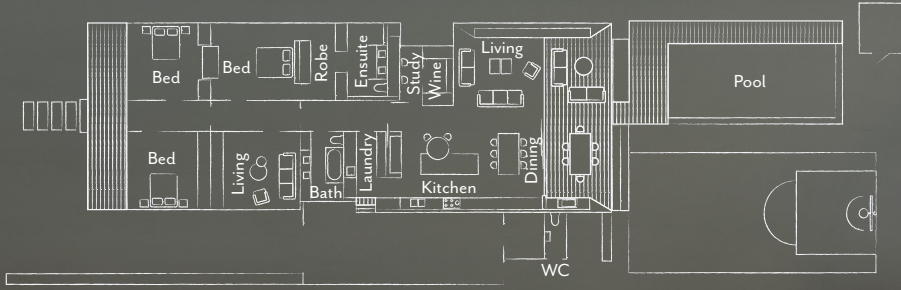


**BATHROOM** Joinery in Polytec Boston Oak. Cloudburst Concrete benchtop, Caesarstone. Bath, Caroma. 'Elysian' tapware, ABI Interiors. 'Miles' bath sheet, Baina. 'Castello' tiles in Silver Fox, National Tiles. 'Luna' joinery pulls, Lo & Co Interiors. 'Lord' sconce powdercoated Dulux Horizon Blue, Dowel Jones. Middle of Nowhere 'Flynn' mirrors, Lilly + Lolly. Vase, Yeend Studio. **STUDY** Desk in Laminex Oyster Grey melamine. Joinery in Porta 'Contours' Tasmanian oak. 'Plat' handle, Auburn Woodturning. Concrete floors, Stylecrete. 'Twill' chair, DesignByThem. Pencil, Third Drawer Down. Mirror, Ikea. **POOL** Pool, Elite Pools & Landscapes. Ball, Sunnlyfe. **BEDROOM** *Opposite* Robe joinery in Polytec Boston Oak. Handles, Pretty Pegs. Normann Copenhagen 'Rise' lamp, Finnish Design Shop. Vitra dolls, Aura Objects. Green cushion, Koala Living. 'Bloom' cushion, Rachel Castle. Bed linen, H&M. Blanket, Klippan.

Paint colours are reproduced as accurately as printing processes allow.



## THE LAYOUT



**POOL AREA** Pool by Elite Pools & Landscapes, lined with 'Resort' mosaic tiles in White Gloss, National Tiles. Kapur timber decking.



## THE SOURCE

*Blur the lines between indoors and outdoors with these homewares in shades inspired by nature.*



1 'Tub' jug, \$185, Living Edge. 2 Broad small pendant, \$653, Coco Flip. 3 'Delta S-Line' switch coverplate in Jade Green, \$5.24, Bunnings. 4 'Linear' steel outdoor table in Pale Blue, \$2695, Living Edge. 5 'European' Turkish cotton bath towel in Willow Green Multi, \$54.99, Adairs. 6 Kartell 'Componibili' storage unit in White, \$245, Space. 7 'Jumble Garden' cushion, \$109, Castle. 8 'Reo II' smart three-seater sofa, from \$3490, King Living. 9 'Akari UF3-Q' floor lamp, \$2400, Living Edge. 10 'Twill' metal chair in Pale Eucalypt, \$499, DesignByThem. **H&G**